

TECU® System Shingles

Besides their special aesthetic qualities, TECU® System Shingles offer decisive economic advantages in façade design. Cladding elements are laid simply by hanging them and interlocking them with each other.

TECU® Slot-In Panels System

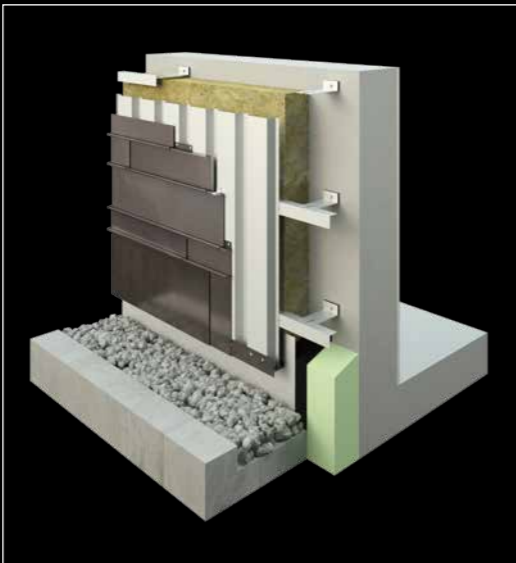
TECU® Panels are two-sided cladding elements, with or without an end base, depending on the construction. Individual lengths are as long as 4,000 mm with a standard width of up to approx. 500 mm. Assembly at the building site is performed according to the tongue and groove principle or by overlapping.

TECU® System Cassettes

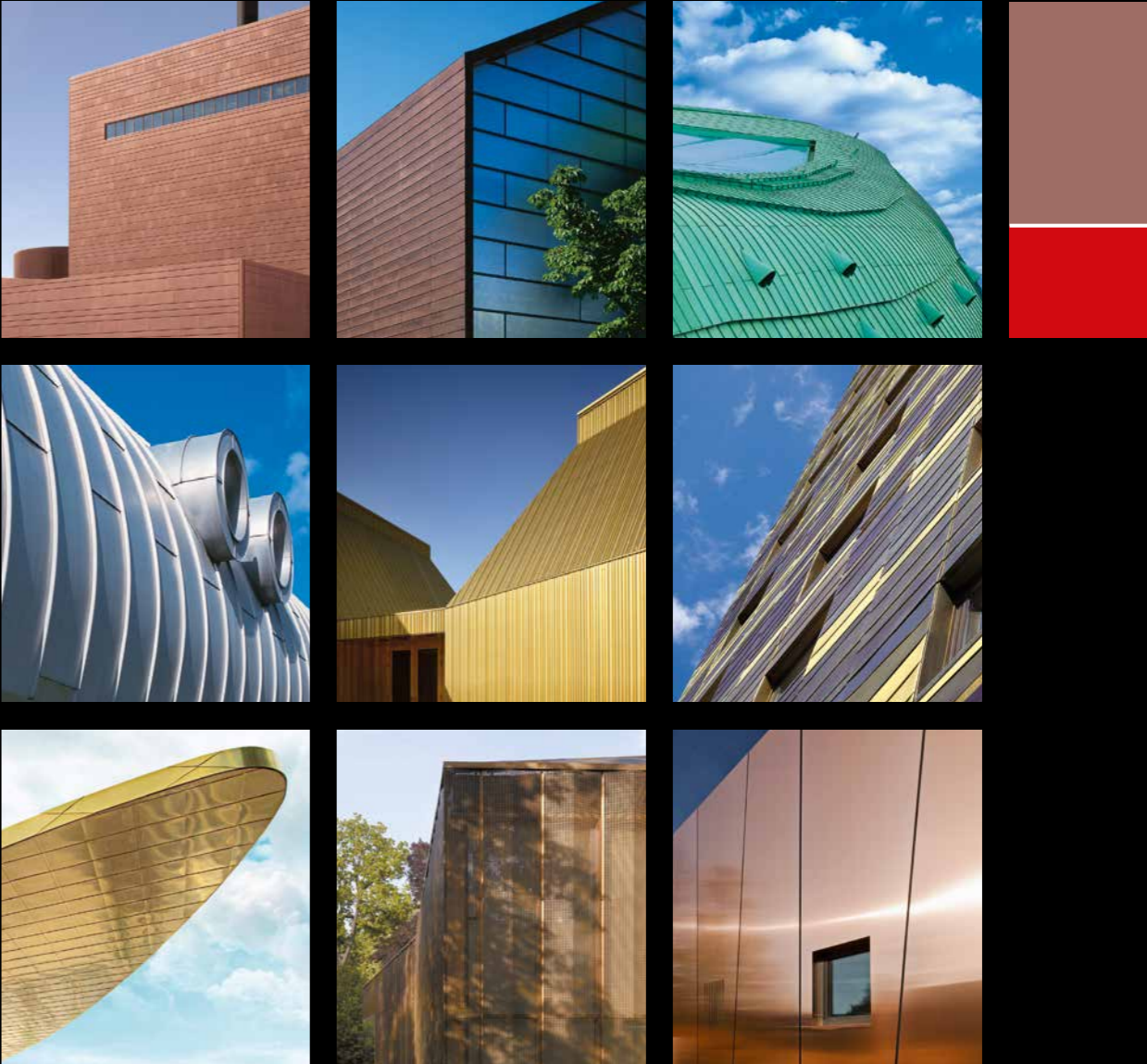
TECU® Cassettes are cladding elements with folded edges on all sides available in a range of geometrical proportions from 1:1 to 1:4. They are exclusively pre-profiled to the customer specifications and/or according to suggestions made by the architect.

TECU® Standing-Seam System

The use of angle standing seams and batten cap cladding is an ideal solution for custom designed free forms as well as for traditional roof and façade constructions. TECU® products for these types of cladding are available in sheets and strips.



KME Germany GmbH & Co. KG
TECU® Product Range - Overview -
[EN]



KME Germany GmbH & Co. KG
Klosterstraße 29
49074 OSNABRÜCK
GERMANY
Phone +49 (0)541 321-2000
Fax +49 (0)541 321-2111
info-tecu@kme.com

For further detailed information
about TECU® products and systems,
please have a look on our website
www.kme.com/tecu

TECU®
Modern solutions in copper –
for roof and façade

TECU® Classic
Bright rolled, high quality copper with many unique benefits: Simple and economic handling, extremely long life and a surface that becomes increasingly attractive.



TECU® Oxid
Roofing and façade cladding material, oxidised on both sides: The aesthetic appearance of an attractive, naturally oxidised surface right from the moment it is installed.

TECU® Patina
Copper material, patinated green on one side. The natural green patina of copper impresses right from the outset - without having to wait for the atmosphere to exert its influences.



TECU® Patina
New diversity for a green facade!
The many different nuances and shades of the surface blend only gradually. After installation the surfaces continue to develop in a completely natural manner being characteristic of copper.

TECU® Brass
A copper-zinc alloy for façade cladding with a yellowish golden surface that regularly changes with the effects of weathering.



TECU® Bronze
An alloy of copper and tin with a pleasant, warm, reddish brown surface, which develops in a manner characteristic for bronze through the effects of weathering.

TECU® Gold
A copper alloy with a long-lasting warm, brown golden surface. Façade solutions in TECU® Gold give buildings a discreet value image.



TECU® Zinn
Specially tinned copper, surface treated on both sides. The combination of copper and tin creates an enduring, attractive warm grey surface.

TECU® VISION

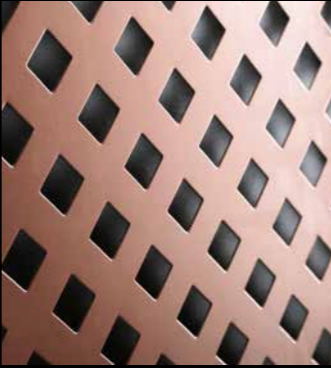
TECU® BOND

TECU® Iron
Copper: sensationally different!
TECU® Iron in the variants TECU® Iron_one and TECU® Iron_two enable you to create fascinating and lively perspectives with copper in facade cladding and in roof design.



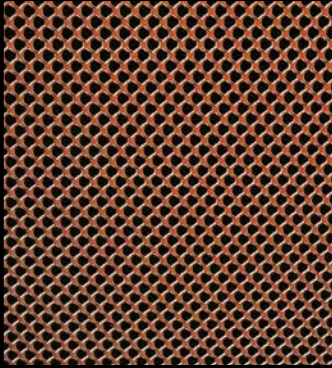
TECU® Iron
Light and shade, bright and dark, dry and wet – all generate different optical nuances that make TECU® Iron a popular material for metal facades.

_punch
The perforations of the TECU® surfaces are made by punching the copper and copper alloy strips after production. The punched parts are fed immediately to the recycling process where they are further processed.



_mesh
After the copper and copper alloy strips have been produced the TECU®_mesh structures are created by perforating and then stretching the material.

_flatmesh
The TECU®_flatmesh designs are also made by perforating the copper and copper alloy strips and then stretching the material. The stretched metal is then rolled to produce the almost flat TECU®_flatmesh surface.



_shape
After the copper and copper alloy strips are produced the three-dimensional shapes of the TECU® surfaces are made by hammering, stamping and hydroforming. These processes have no effect on the familiar positive TECU® properties.

TECU® Bond
Cladding large façades and interior areas quickly and economically with TECU® quality copper – without compromising on the outward appearance.

